

# **NETSIA**

**SEBA Combo PON Support**

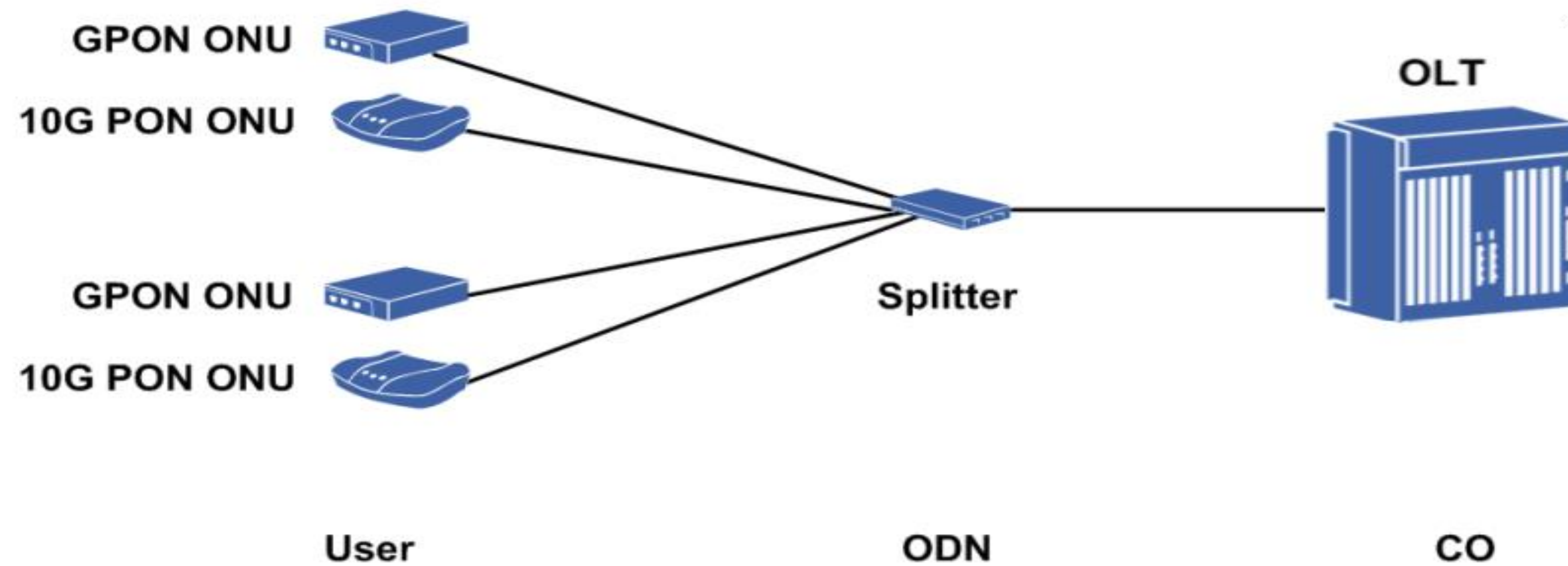
**Serkant Uluderya** VOLTHA TST Member

**Bariş Ertaş** VOLTHA Community Member

- What is COMBO PON
- Key Design Decisions
- Integration with VOLTHA
- Combo PON Support in BBSIM



# Combo PON



Single physical PON Interface  
Multiple Access Technologies

**VOLTHA** interfaces should be modified as little as possible.

**NB interface** should be independent of the PON technology.

**Fasten** the development cycle by little vendor support

**Enhance** Alarm & PM with extra information.

**Prevent** complexity by eliminating GPON/XGS distinction in technology profiles.

**Preserve** configuration changes in OLT

## ONU Model concept

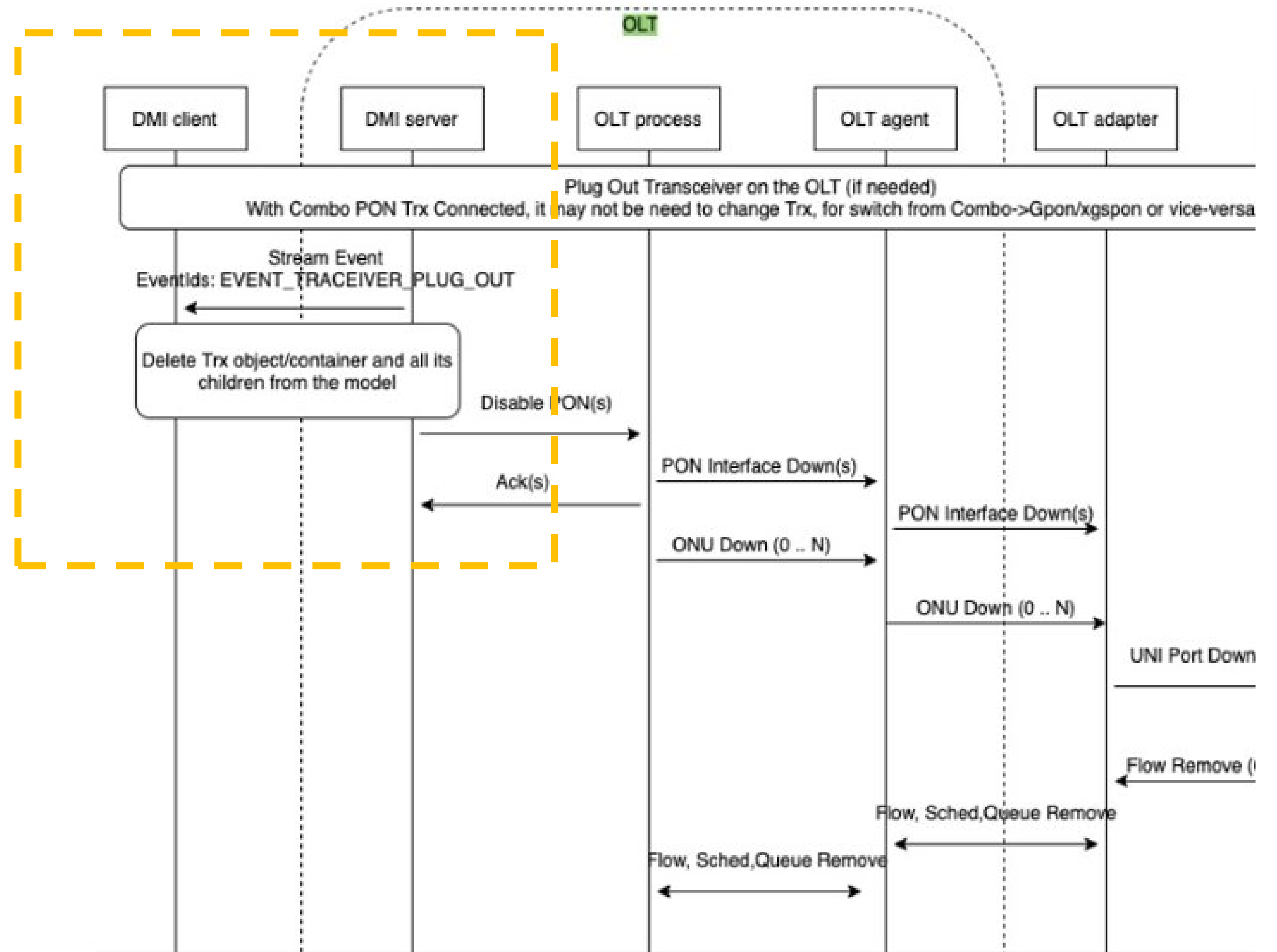
- TECHNOLOGY MISMATCH alarm if inappropriate ONU device is provisioned



# Dynamic SFP Technology Operation

Requires **vendor** intervention

Developed an easy to use script for operation.



OLT packaged with initial configuration  
Technology is always ANY PON  
Further changes should be made per SFP

## PHYSICAL PON PORT MAPPING

PHY 1	PHY 2	PHY 3	PHY 4	PHY 5
XGS	GPON	COMBO	COMBO	GPON
0	2	4-5	6-7	8

### COMBO SFP

- $2n - 2 \rightarrow$  XGS
- $2n - 1 \rightarrow$  GPON

### ONLY SFP

- $2n - 2 \rightarrow$  XGS/GPON



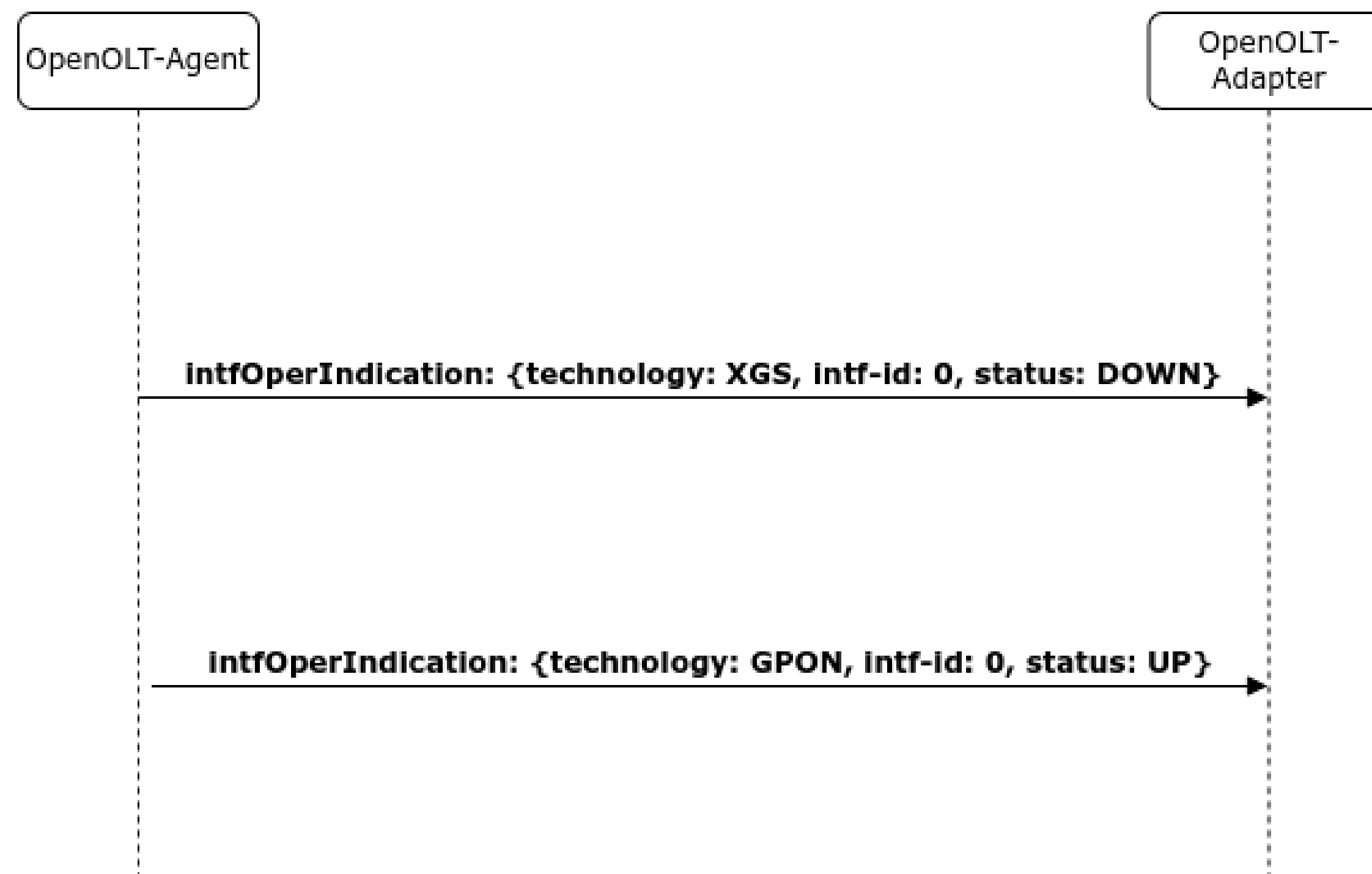
# Affected Components

- RW-CORE
  - Logical/Physical ID Abstraction
- OPENOLT-ADAPTER
  - PON Manipulation based on intfOperIndication

## SFP Switch Operation

1. Physical operation
2. Run the script (No need to OLT Reboot)

*SFP Switch Operation from XGS to GPON on 1st Physical Pon Port*



### Supports different SFP technologies

- `./bbsim -pon 10 -xgs 4 -gpon 3 -combo 3 -any true`

### Supports SFP switching between different technologies

- `./bbsimctl pon changeSFP 1 GPON`

### Supports hardcoded GPON ONU model for BBSIM



# **NETSIA**

Thank you!  
Questions?